



NISSL EICHERT  
HYDRONIC  
HEATING

ideal  
HEATING

INDUSTRY LEADING  
**10 YEAR**  
**WARRANTY\***  
ON PARTS AND LABOUR

\*annual service required

## IDEAL LOGIC+



Award winning boilers  
made in the UK



Aluminium heat exchanger  
10 year warranty



Custom designed  
external cover



Lightweight components  
to reduce lift weight



Super quiet operation,  
UK Quietmark compliant



Premium components  
with compact design

AUSTRALIA'S MOST ADVANCED HYDRONIC BOILER RANGE

## WHY CHOOSE IDEAL BOILERS?

Designed and developed for Australian conditions, Ideal boilers have been made in Britain since 1906. The Logic+ is the highest selling boiler model in the UK. High efficiency, fewer emissions and ultra-quiet operation make the Ideal Logic+ the most advanced hydronic boiler ever introduced into the Australian Market.

Backed by the industry leading **10 year warranty (Parts + Labour)**, the Ideal Logic+ is the obvious choice for the conscientious home owner.



NISSL EICHERT  
HYDRONIC  
HEATING

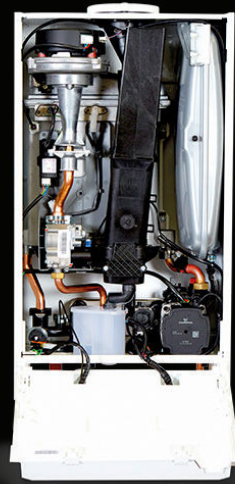
**MELBOURNE SHOWROOM**  
257 Canterbury Rd, Canterbury, VIC 3126  
03 9836 1484  
[WWW.NISSLEICHERTHEATING.COM.AU](http://WWW.NISSLEICHERTHEATING.COM.AU)

# ideal

HEATING

INDUSTRY LEADING  
**10 YEAR**  
**WARRANTY\***  
ON PARTS AND LABOUR

\*annual service required



## LOGIC+ RANGE

WELCOME TO OUR IDEOLOGY

| General Data                             |                    | 18 System              |       | 30 System              |        | 35 Combi               |       |
|--|--------------------|------------------------|-------|------------------------|--------|------------------------|-------|
| Gas Supply                               |                    | Natural Gas at 1.13kPa |       | Natural Gas at 1.13kPa |        | Natural Gas at 1.13kPa |       |
| Gas Supply Connection                    |                    | 3/4"                   |       | 3/4"                   |        | 3/4"                   |       |
| Inlet Connection                         | Domestic Hot Water | N/A                    |       | N/A                    |        | 1/2"                   |       |
| Outlet Connection                        | Domestic Hot Water | N/A                    |       | N/A                    |        | 1/2"                   |       |
| Flow Connection                          | Central Heating    | 3/4"                   |       | 3/4"                   |        | 3/4"                   |       |
| Return Connection                        | Central Heating    | 3/4"                   |       | 3/4"                   |        | 3/4"                   |       |
| Flue Terminal Diameter                   | mm                 | 100                    |       | 100                    |        | 100                    |       |
| Packaged Weight (External)               | kg                 | 46.8                   |       | 46.8                   |        | 50.0                   |       |
| Performance Data - Central Heating       |                    | Min                    | Max   | Min                    | Max    | Min                    | Max   |
| Boiler output (non-condensing) Mean 70°C | kW                 | 4.8                    | 18.0  | 6.1                    | 30.3   | 7.1                    | 24.2  |
| Boiler output (condensing) Mean 40°C     | kW                 | 5.1                    | 19.1  | 6.4                    | 31.0   | 7.5                    | 25.6  |
| Gas Consumption                          | MJ/h               | 18.5                   | 71.43 | 23.01                  | 119.41 | 27.16                  | 142.2 |
| Performance Data - Domestic Hot Water    |                    |                        |       |                        |        |                        |       |
| Maximum DHW Output                       | kW                 | N/A                    |       | N/A                    |        | 35.3                   |       |
| DHW Flow Rate at 25° temp. rise          | l/min              | N/A                    |       | N/A                    |        | 20.2                   |       |



### EXTERNAL MODEL DIMENSIONS

