



NISSL EICHERT  
HYDRONIC  
HEATING

ideal  
HEATING

INDUSTRY LEADING  
**6 YEAR**  
**WARRANTY\***  
ON PARTS AND LABOUR

\*annual service required

## IDEAL LOGIC+



Award winning boilers  
made in the UK



Aluminium heat exchanger  
6 year warranty



Custom designed  
external cover



Lightweight components  
to reduce lift weight



Super quiet operation,  
UK Quietmark compliant



Premium components  
with compact design

AUSTRALIA'S MOST ADVANCED HYDRONIC BOILER RANGE

## WHY CHOOSE IDEAL BOILERS?

Designed and developed for Australian conditions, Ideal boilers have been made in Britain since 1906. The Logic+ is the highest selling boiler model in the UK. High efficiency, fewer emissions and ultra-quiet operation make the Ideal Logic+ the most advanced hydronic boiler ever introduced into the Australian Market.

Backed by the industry leading **6 year warranty (Parts + Labour)**, the Ideal Logic+ is the obvious choice for the conscientious home owner.



NISSL EICHERT  
HYDRONIC  
HEATING

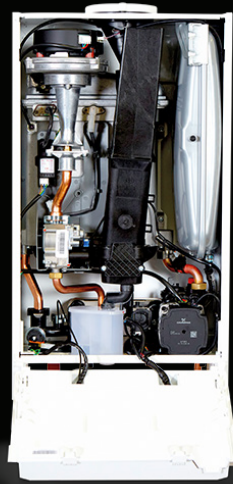
**MELBOURNE SHOWROOM**  
257 Canterbury Rd, Canterbury, VIC 3126  
03 9836 1484  
[WWW.NISSLEICHERTHEATING.COM.AU](http://WWW.NISSLEICHERTHEATING.COM.AU)

# ideal

HEATING

INDUSTRY LEADING  
**6 YEAR**  
**WARRANTY\***  
 ON PARTS AND LABOUR

\*annual service required



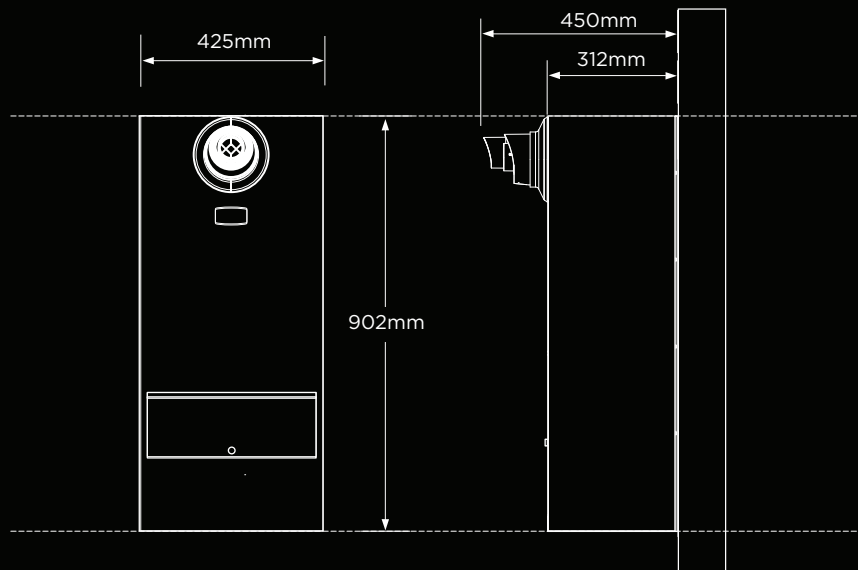
## LOGIC+ RANGE

WELCOME TO OUR IDEOLOGY

General Data		18 System		30 System		35 Combi	
Gas Supply		Natural Gas at 1.13kPa		Natural Gas at 1.13kPa		Natural Gas at 1.13kPa	
Gas Supply Connection		3/4"		3/4"		3/4"	
Inlet Connection	Domestic Hot Water	N/A		N/A		1/2"	
Outlet Connection	Domestic Hot Water	N/A		N/A		1/2"	
Flow Connection	Central Heating	3/4"		3/4"		3/4"	
Return Connection	Central Heating	3/4"		3/4"		3/4"	
Flue Terminal Diameter	mm	100		100		100	
Packaged Weight (External)	kg	46.8		46.8		50.0	
Performance Data - Central Heating		Min	Max	Min	Max	Min	Max
Boiler output (non-condensing) Mean 70°C	kW	4.8	18.0	6.1	30.3	7.1	24.2
Boiler output (condensing) Mean 40°C	kW	5.1	19.1	6.4	31.0	7.5	25.6
Gas Consumption	MJ/h	18.5	71.43	23.01	119.41	27.16	142.2
Performance Data - Domestic Hot Water							
Maximum DHW Output	kW	N/A		N/A		35.3	
DHW Flow Rate at 25° temp. rise	l/min	N/A		N/A		20.2	



### EXTERNAL MODEL DIMENSIONS



**NISSL**  
 NISSLEICHERT  
 HYDRONIC  
 HEATING

257 Canterbury Rd, Canterbury, VIC 3126  
 03 9836 1484  
[WWW.NISSLEICHERTHEATING.COM.AU](http://WWW.NISSLEICHERTHEATING.COM.AU)