



NISSL EICHERT  
HYDRONIC  
HEATING

ideal  
HEATING

INDUSTRY LEADING  
**6 YEAR**  
WARRANTY\*  
ON PARTS AND LABOUR

\*annual service required. 3 years on existing system installation

## IDEAL LOGIC+



Award winning boilers made in the UK



Aluminium heat exchanger 6 year warranty



Custom designed external cover



Lightweight components to reduce lift weight



Super quiet operation, UK Quietmark compliant



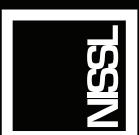
Premium components with compact design

AUSTRALIA'S MOST ADVANCED HYDRONIC BOILER RANGE

## WHY CHOOSE IDEAL BOILERS?

Designed and developed for Australian conditions, Ideal boilers have been made in Britain since 1906. The Logic+ is the highest selling boiler model in the UK. High efficiency, fewer emissions and ultra-quiet operation make the Ideal Logic+ the most advanced hydronic boiler ever introduced into the Australian Market.

Backed by the industry leading **6 year warranty (Parts + Labour)**, the Ideal Logic+ is the obvious choice for the conscientious home owner.



NISSL EICHERT  
HYDRONIC  
HEATING

### MELBOURNE SHOWROOM

257 Canterbury Rd, Canterbury, VIC 3126  
03 9836 1484

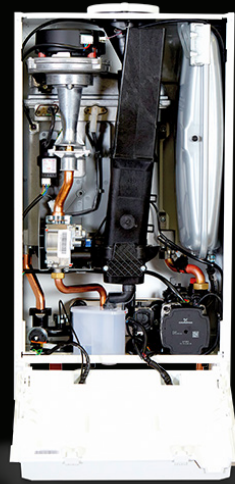
[WWW.NISSLEICHERTHEATING.COM.AU](http://WWW.NISSLEICHERTHEATING.COM.AU)

# ideal

HEATING

INDUSTRY LEADING  
**6 YEAR**  
**WARRANTY\***  
ON PARTS AND LABOUR

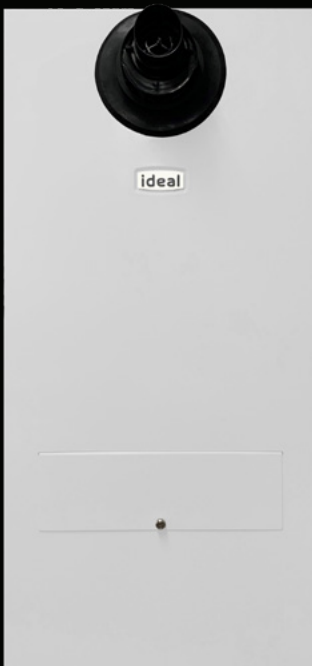
\*annual service required. 3 years on existing system installation



## LOGIC+ RANGE

WELCOME TO OUR IDEOLOGY

| General Data                             |                    | 18 System              |       | 30 System              |        | 35 Combi               |       |
|--|--------------------|------------------------|-------|------------------------|--------|------------------------|-------|
| Gas Supply                               |                    | Natural Gas at 1.13kPa |       | Natural Gas at 1.13kPa |        | Natural Gas at 1.13kPa |       |
| Gas Supply Connection                    |                    | 3/4"                   |       | 3/4"                   |        | 3/4"                   |       |
| Inlet Connection                         | Domestic Hot Water | N/A                    |       | N/A                    |        | 1/2"                   |       |
| Outlet Connection                        | Domestic Hot Water | N/A                    |       | N/A                    |        | 1/2"                   |       |
| Flow Connection                          | Central Heating    | 3/4"                   |       | 3/4"                   |        | 3/4"                   |       |
| Return Connection                        | Central Heating    | 3/4"                   |       | 3/4"                   |        | 3/4"                   |       |
| Flue Terminal Diameter                   | mm                 | 100                    |       | 100                    |        | 100                    |       |
| Packaged Weight (External)               | kg                 | 46.8                   |       | 46.8                   |        | 50.0                   |       |
| Performance Data - Central Heating       |                    | Min                    | Max   | Min                    | Max    | Min                    | Max   |
| Boiler output (non-condensing) Mean 70°C | kW                 | 4.8                    | 18.0  | 6.1                    | 30.3   | 7.1                    | 24.2  |
| Boiler output (condensing) Mean 40°C     | kW                 | 5.1                    | 19.1  | 6.4                    | 31.0   | 7.5                    | 25.6  |
| Gas Consumption                          | MJ/h               | 18.5                   | 71.43 | 23.01                  | 119.41 | 27.16                  | 142.2 |
| Performance Data - Domestic Hot Water    |                    |                        |       |                        |        |                        |       |
| Maximum DHW Output                       | kW                 | N/A                    |       | N/A                    |        | 35.3                   |       |
| DHW Flow Rate at 25° temp. rise          | l/min              | N/A                    |       | N/A                    |        | 20.2                   |       |



### EXTERNAL MODEL DIMENSIONS

